

Chalet Adele Fiesch Holiday Comfort *****

Address;;

Chalet Adele, BKA 109, Luss 38, CH-3984 Fiesch

Address landlord

Familie Adèle und Max Arnold, Bielastrasse 51, CH-3900 Brig

Telefon: +41 27 923 23 23 / +41 79 280 48 34 / +41 79 301 27 75

E-Mail / Internet: adele@rhone.ch / www.adele.aletscharena.ch

Pictures summer



Winter pictures



Dear holiday guests!

Welcome to the Chalet Adele in Fiesch

We welcome you dear holiday guests, a very warm welcome to our holiday chalet Adele in Fiesch.

We are pleased if you can choose our holiday home.

When you arrive in Fiesch, we welcome you personally and introduce you to the chalet and hand over the house keys.

With the description below we want to offer you some information.

The house was built in 1981! We try to offer our guests a pleasant and cozy atmosphere.

For this we continuously invest in the building, in the facilities and in the environment.

Let yourself be captured by the beauty and tranquility of the mountains. Enjoy the most beautiful days of the year undisturbed. We wish you a good rest and a pleasant stay in our Chalet Adele. **Liebe Ferien-Gäste!**

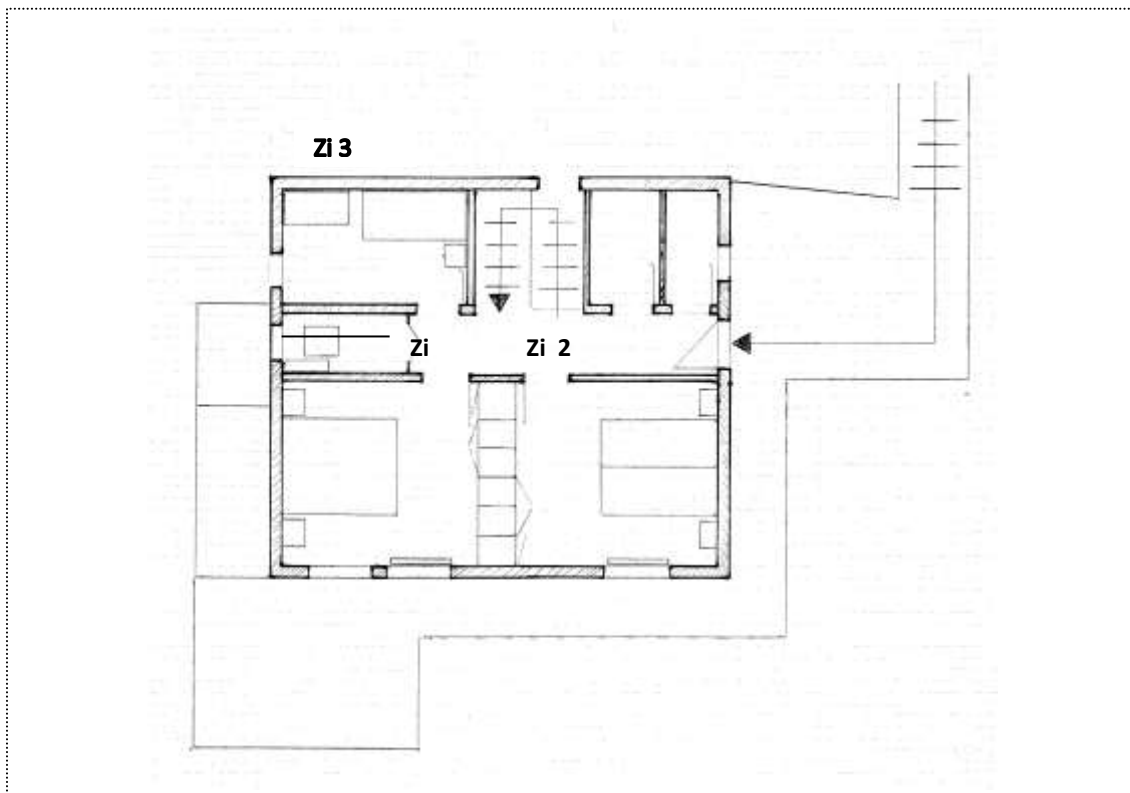
1. Description and equipment

The Chalet Adele is a detached holiday home with 2 floors and is located in Planfeld D8 of the municipality of Fiesch in the Aletsch Arena. The exact location is shown in the map with No. 234.

The house is in a very quiet and sunny location with an unobstructed view over the valley and the surrounding Valais mountains.

Train station, cable car, post office, doctors, pharmacy, swimming pool, bakeries and shops are in 5-10 minutes walking distance.

Ground floor plan



Description EG

Bedroom 1

- Bedroom with 2 beds, mattresses 90 x 200
- Lattli with headboard
- 2 pillows 65 x 100
- 2 duvets 160 x 200
- 2 bedside tables
- 1 built-in wardrobe, 2 parts
- 1 cot with bed linen is available on request



Bedroom 2

- Bedroom with 2 beds, mattresses 90 x 190
- 2 Lattli with headboard
- 2 pillows 65 x 100
- 2 Duvet 160 x 210
- 2 bedside tables
- 3-piece built-in wardrobe



Bedroom 3

- Bedroom with bunk beds
- Lattli with headboard
- 2 mattresses 90 x 190
- 2 pillows 65 x 100
- 2 duvets 160 x 210
- 1 bedside table
- Wardrobe 2 parts



shower

- shower with shower wall
- washbasin
- mirror cabinet
- hair dryer



WC

- WC
- washbasin
- wall mirror
- fuse distribution box

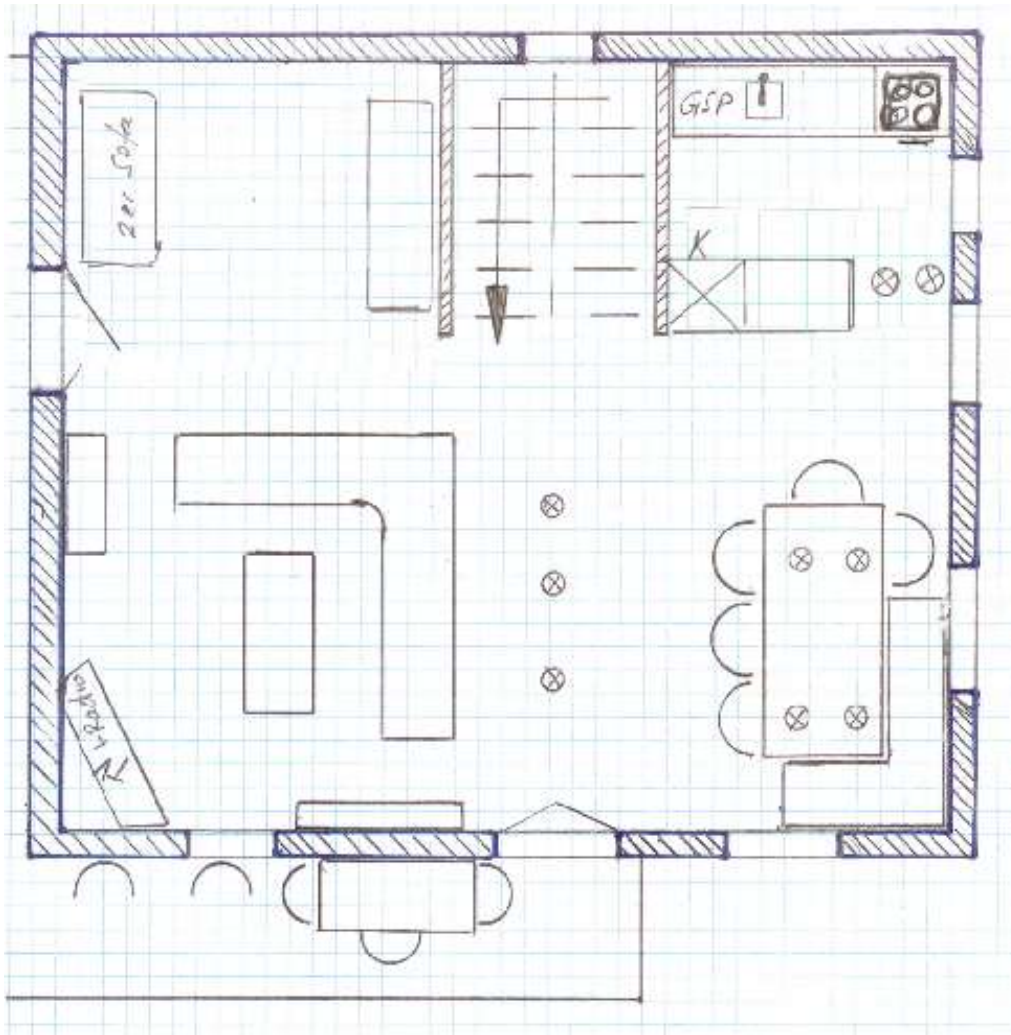


Storage room

- vacuum cleaner,
- broom etc.
- fully automatic washing machine



Floor plan 1. Stock



Kitchen

- Modern kitchen combination consisting of:
- cooker with oven and glass ceramic hob
- dishwasher - microwave
- large fridge with freezer compartment
- rubbish bin
- wall cupboards with kitchen utensils, cutlery, glasses - pans, pots, fondue ears and fondue pan, raclette oven
- kettle, coffee machine etc.



dining room

- table with corner seat
- 4 chairs with backrest



Living room

- Comfortable large leather corner seating area
- Stereo system with digital radio and CD player as well as USB connection for iPhone etc.
- SWISSCOM TV
- WLAN / Internet; WLAN lcy-71546
Code see phone list
- Phone
- Blanket



SWISSCOM TV 2.0 light / TV Rad

Switch on the TV with the main switch in the upper right corner and the SWISSCOM TV box.

with the remote control. You can receive over 100 TV channels, 40 of which are in HD quality, as well as 200 radio stations.

Please do not make any changes to the programming.

The reception of radio programmes can be switched on with the remote control.

You can find the description of the remote control in the house folder.

TV Box



Balcony

On the 2-sided balcony a table and 4 chairs are at your disposal.

A small staircase leads from the balcony directly to the outside seating area.

Enjoy the sun, flowers and meadows, the peace and the view.



Outside space with seat

seating area A large outside seat, sunbathing lawn and lawn with an unobstructed view is available to guests. Garden fireplace, garden table and 6 garden chairs and 1 parasol are available. The outside seating area can also be reached easily via the terrace and stairs. The watering of the lawn and flowers is done automatically in the evening between 19:00 and 20:00



General and prices

Only you will live in the chalet.

Bettwäsche The bed linen and kitchen towels are provided on request.

CHF 12.- per person will be charged for the bed linen.

- The terry towels are provided on request, CHF 5.- per person
- CHF 120.- will be charged for the final cleaning. We clean the chalet.
- You can find the rental price on our website www.adele.aletscharena.ch.
- For longer rental periods, we grant a price reduction after consultation.
- CHF 2.60 per rubbish bag will be charged for waste disposal.
- The tourist tax must be paid to the landlord on the first day.
- The electrical energy is charged according to consumption.
- Train station, cable car, post office, doctors, pharmacy, swimming pool, bakeries and shops are within a 5-10 minute walk.
- Chalet The chalet is located in plan field D 8 on the border, in a very quiet and sunny location with a clear view of the valley and the surrounding Valais mountains.
- The exact location is shown in the enclosed town map.
- The windows are made of wood / metal with triple insulating glass.
- The house facade was insulated and renewed. (Insulation 140 mm)
- A new kitchen with a dishwasher, ceramic hob and larger fridge was installed and the wall and floor panels were renewed.
- The living and dining room has also been insulated and repainted.
- The lawn and flowers are watered automatically.
- On arrival in Fiesch we will personally welcome you and introduce you to the chalet and hand over the keys.

We are at your disposal for further information. We would be happy to welcome you in Fiesch as our guests and wish you a pleasant and relaxing vacation.

Fiesch 26.01.2020 ar